

# HD12 SCREED



**PRODUCT CODE:** 3250 - 2.5 litre pack: 3251 - 10 litre pack

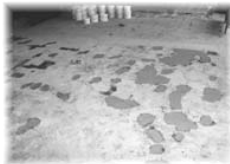
**DESCRIPTION:** Epoxy resin is a 3-part mix. Used as a floor screed or for the repair of damaged concrete floors.

**PACKAGING:** 2.5 litres (4.75kg) coverage at 5mm thickness 0.5m<sup>2</sup>.  
10 litres (19kg) coverage at 5mm thickness 2.0m<sup>2</sup>.  
Materials supplied in non-returnable plastic containers for ease of mixing.

**PREPARATION:** Concrete surfaces should be clean and free from laitance. Steel surfaces should be clean and free from loose rust, grease and millscale. All surfaces should be coated with Rotafix **P12 PRIMER** prior to application of **HD12 SCREED**.

**MIXING:** The contents of the **ROTAFIX HD12 SCREED** hardener (curing agent) should be added to the contents of the resin container and the two liquids mixed thoroughly. The total liquid is then added to the filler and mixing is continued until all the aggregate has been thoroughly wetted. Mixing is possible with a stiff bladed pallet knife reference no. 3642 when using the 2.5 litre packs. The 10 litre pack requires to be mechanically mixed using a slow speed drill and Rotafix paddle reference no. 3640.

**APPLICATION:** **HD12** should only be applied to primed substrates. **ROTAFIX P12 PRIMER** is suitable for this use. The **HD12** should be applied whilst the primer is wet or tacky. Further additions of **HD12** require an additional primer coat. NB: all mixed screed should be applied and float finished within 45 minutes of mixing assuming an ambient temperature of no more than 15°C - 18°C .



**COVERAGE:** 1 litre covers 1m<sup>2</sup> at 1mm thickness.

**CURE SCHEDULE:** When mixed **HD12 SCREED** will cure at rates dependent on mass and ambient temperatures. Initial gel (touch dry) will be approximately 3 hours at +15°C at 5mm thick. Initial cure - 24 hours. Full chemical and physical characteristics will be obtained in 7 days at +18°C.

Suitable for foot traffic after 12-18 hours at +20°C. Light vehicular traffic 24-36 hours at +20°C. Final cure 5-7 days. Minimum application temperature +5°C. Shelf life of unmixed component minimum 12 months providing extremes of temperature are avoided.

**CURED PROPERTIES:** Compressive Strength: 40+N/mm<sup>2</sup> Tensile Strength: 15N/mm<sup>2</sup>  
Flexural Strength: 14.5N/mm<sup>2</sup> Specific Gravity: 1.9 20°C  
Chemical resistance - unaffected by a wide range of industrial and domestic chemicals. Does not support the growth of biological organisms. Colour stable. For specific applications please consult our Technical Department.

**SPECIFIC USES:** Repair of damaged concrete floors.

**CLEANING OF TOOLS:** Uncured **HD12 SCREED** may be readily removed from tools and equipment with Rotafix **S200 PC** Solvent Cleaner. Mechanical methods are required to remove cured material.

The requirements for a Rotafix product(s) may be specific for an individual project.  
Advice given by Rotafix can only be considered as part of the contract if it is provided in writing.

Epoxy resins and their associated curing agents can cause irritation to some people.  
Please take the necessary precautions indicated in the COSHH details available from our offices.  
Please read our Users Safety Guide on the Handling of Resin and Polymer products.

The information in this document is based on practical tests, but given without guarantee inasmuch as methods of use by others is beyond our control. Due to continuing development and improvements, it may be necessary to change without notice the material specification. All goods are sold subject to our Standard Conditions of Sale.



**ROTAFIX, ROTAFIX HOUSE, ABERCRAF SWANSEA SA9 1UR. U.K.**

**TEL: +44 (0)1639 730481 FAX: +44 (0)1639 730858**

**e.mail: [sales@rotafix.co.uk](mailto:sales@rotafix.co.uk)**

**Website: [www.rotafix.co.uk](http://www.rotafix.co.uk)**

**SOUTHERN AREA CONTACT:**

**TEL: +44 (0)1442 243169 FAX: +44 (0)1442 234901**