

## RM20 LW REPAIR MORTAR

**PRODUCT CODE:** 3370 - 2.5 litre pack: 3375 - 10 litre pack

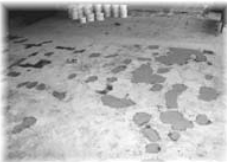
**DESCRIPTION:** RM20 LW REPAIR MORTAR Epoxy Resin is a 3-part mix. Lightweight repair mortar.

**PACKAGING:** 2.5 litres (3.2 kg) Coverage at 5mm thickness 0.5m<sup>2</sup>  
10 litres (12.8kg) Coverage at 5mm thickness 2m<sup>2</sup>  
Materials supplied in non returnable plastic containers for ease of mixing.

**PREPARATION:** Concrete surfaces should be clean and free from Laitance. Reinforcing steel should be clean and free from loose rust. Rotafix RM20 LW REPAIR MORTAR is compatible with most steel primers. All surfaces should be coated with Rotafix P12 PRIMER prior to the application of RM20 LW REPAIR MORTAR.

**MIXING:** The contents of the RM20 LW REPAIR MORTAR Hardener (curing agent) must be added to the contents of the resin container and mixed thoroughly. The total liquid is then added to the filler and mixed thoroughly. The 10 litre pack requires to be mechanically mixed using a slow speed drill and a Rotafix paddle.

**APPLICATION:** The fully mixed material should be placed immediately onto the wet/tacky primer. If the primer dries prior to application of the RM20 LW REPAIR MORTAR the area must be re-primed. RM20 LW REPAIR MORTAR should be applied to the vertical or overhead surface by use of a steel trowel and hawk using a plastering type technique. The contents of the pack should be mixed, placed and trowel finished in not more than 40 minutes at +18°C. The thickness obtainable will be dependent on a number of factors:-



- a) whether the position is vertical or overhead
- b) the type of primer used
- c) the ambient temperature
- d) the individual skill of the operator
- e) the amount of compaction required around reinforcing steel

A thickness of 50-60mm minimum should be obtainable in one application. In the event that a further application is required the RM20 LW REPAIR MORTAR should be re-primed.

**COVERAGE:** 1 litre covers 1m<sup>2</sup> at 1mm thickness.

**CURE SCHEDULE:** Initial cure 4-12 hours at +20°C. Suitable for grinding or drilling 24-48 hours at +20°C. Final cure 5-7 days. Minimum application temperature +5°C. Shelf life of unmixed components minimum 12 months providing extremes of temperatures are avoided. Unaffected by rain or moisture within 3 hours of application at +18°C.

**CURED PROPERTIES:** Compressive strength 25 N/mm<sup>2</sup>. Tensile strength 15 N/mm<sup>2</sup> (provisional). Flexural strength 17 N/mm<sup>2</sup> (provisional). Specific gravity 1.27 at +20°C. Standard colours Beige/Grey (Colour matching service available for stonework). Chemically resistant - unaffected by a wide range of industrial and domestic chemicals. For specific applications please consult our Technical Department.

**SPECIFIC USES:** Suitable for structural repairs of reinforced concrete in horizontal and overhead situations. 50mm in one application is possible.

**APPROVAL:** RM20 LW REPAIR MORTAR conforms to the Water Research Council Test Requirements of BS 6920 for use in potable water situations.

**CLEANING OF TOOLS:** Uncured RM20 LW REPAIR MORTAR may be readily removed from tools and equipment with Rotafix S200 PC Solvent Cleaner. Mechanical methods are required to remove cured material.

Epoxy resins and their associated curing agents can cause irritation to some people. Please take the necessary precautions indicated in the COSHH details available from our offices.

Please read our Users Safety Guide on the Handling of Resin and Polymer products.

The information in this document is based on practical tests, but given without guarantee insomuch as methods of use by others is beyond our control. Due to continuing development and improvements, it may be necessary to change without notice the material specification. All goods are sold subject to our Standard Conditions of Sale.



**ROTAFIX, ROTAFIX HOUSE, ABERCRAF,  
SWANSEA SA9 1UR. U.K.**  
TEL: +44 (0)1639 730481 FAX: +44 (0)1639 730858  
e.mail: [sales@rotafix.co.uk](mailto:sales@rotafix.co.uk)  
Website: [www.rotafix.co.uk](http://www.rotafix.co.uk)

**SOUTHERN AREA CONTACT:**  
TEL: +44 (0)1442 243169 FAX: +44 (0)1442 234901

PD3370-5/9